

## Window Panels

Rigid Polycarbonate or  
Fluted Polycarbonate



855.647.6909



800.310.4874



[www.versare.com](http://www.versare.com)

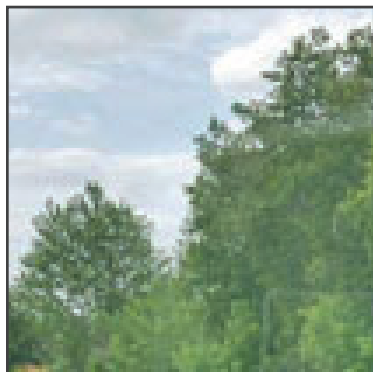
**Material:** A - Rigid Polycarbonate or B - Fluted Polycarbonate

**Impact Resistant:** A - Yes, B - Yes

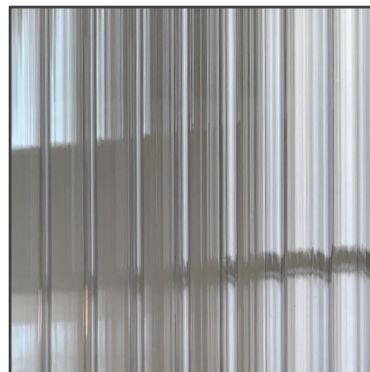
**Flammability:** A - Class B1, B - Class B1

### Maintenance:

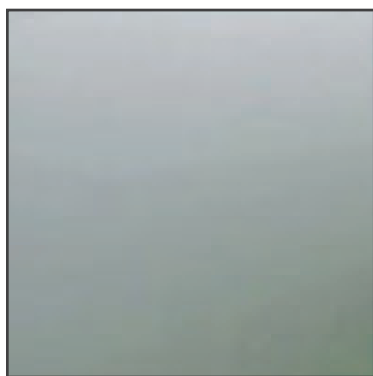
The easiest and safest way to clean acrylic or polycarbonate is with a mild soap, such as dish washing liquid, and a non-abrasive cloth or sponge. Work from the top down to minimize any drips that may run over the finished areas. For acrylic avoid using ammonia or acetone-based products. For polycarbonate avoid using ammonia or alcohol-based products.



CLEAR (A)



CLEAR FLUTED (B)



FROSTED (A)



Versare Solutions, LLC  
3236 California St. NE • Minneapolis, MN 55418  
[customerservice@versare.com](mailto:customerservice@versare.com)

400031 REV A

**Window Panel options are available in:**

Hush Panel Configurable Cubicle Partition (Clear, Clear Fluted, Frosted)

Hush Screen Portable Partition (Clear, Clear Fluted, Frosted)

MediPanel Portable Divider (Clear, Clear Fluted, Frosted, Opal Fluted)

MediPanel Countertop Screen (Clear, Clear Fluted, Frosted)