



EverPanel® Components



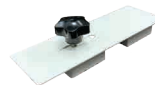
2-WAY CONNECTOR

Can be used on top and bottom to connect panels.



SEAM COVER

Use to cover gaps between panels, ensuring a smooth and polished look.



ADJUSTABLE PANEL CONNECTOR

Use to align and connect the tops of two adjacent panels.



3-WAY CONNECTOR

Can be used on top and bottom to connect three panels.



FINISHING CAP

Use to seal receiver holes for a finished look.



LUG

Use when stacking panels.



LINTEL (NARROW)

Use to create open doorways or with the Door Kit.



L-CHANNEL

Use to anchor panel to fixed wall, floor, or ceiling.

STEP 1. CREATE A CORNER

Tip the first panel and slide the plastic 2-way connector underneath it. Lower the panel until it snaps securely into place. Then, tip the adjacent corner panel onto the same connector and snap it down. Snap a 2-way connector on top of the panels, aligning with the receiver slots, to securely lock the corner in place.



STEP 2. BUILD STRAIGHT WALLS FROM CORNERS

Extend straight walls outward from the corners. Slide a seam cover onto the edge of the panel, then insert the adjacent panel into the cover.

Insert the adjustable panel connector into the receiver holes at the top of the adjacent panels and snap it down. Tighten the knob to secure the panels. There will be no connectors on the bottom.

Tip: You may need to use a putty knife, flathead screwdriver, or rubber mallet to ensure a smooth and secure fit.



STEP 3. EXTEND THE WALLS

Continue attaching each subsequent panel to the previous one using a seam cover. When you reach the next corner, refer back to Step 1 for guidance on corner panel attachment.



STEP 4. INSTALL FINISHING CAPS

Place finishing caps into the open receiver holes you want to cover.



Scan to follow
along with our
assembly video.



ADDITIONAL INSTALL TIPS

ADD STABILITY WITH CORNERS AND COLUMNS

For stability, use corners or columns with L- or T-shaped configurations. Place 2-way connectors at the base before connecting panels. Add a column or wall return every three 4-foot panels and end walls with a column for support.

ADD A DOOR

For simple open doorways, use a standard lintel without the door, securing it over adjacent panels with finishing caps or 2-way connectors.

To install the complete Accordion Door Kit, insert slide discs on the door into the lintel track. Position the lintel with the door on a 7-foot wall, spacing the next panel 36" away. Secure the lintel and door to the wall using finishing caps or 2-way connectors. Once the doorway is hung, add locking clips and receiver tracks to the sides. Snap one side of the door into the clips and the other into the track when closed.

A swing door installs the same way as straight walls, as shown in Step 2.

