

# EverBase 3 Specifications

Questions?

Call us today at 844-910-0369  
or contact us by email at  
sales@everblocksystems.com



Recyclable, chemical resistant, and water proof, EverBase 3 access modular flooring features industrialized connectors that offer strength and durability. This system is designed for fast connection over stadiums, arenas, events and other uneven surfaces.

## Material

High-Impact Polypropylene Co-Polymer (“no-break”) with UV inhibitors added for outdoor use.

## Warranty

Standard 2-year warranty against manufacturer’s defects

## Size

18” x 24”

## Thickness

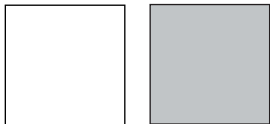
1.1”

## Weight

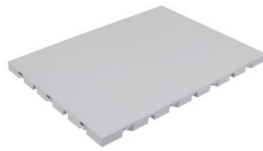
3.61 lbs/tile

## Colors

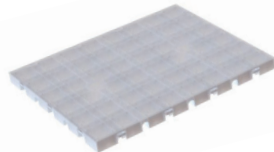
EverRoad comes in Translucent or Light Gray



Solid Top



Drainage Top



Underside

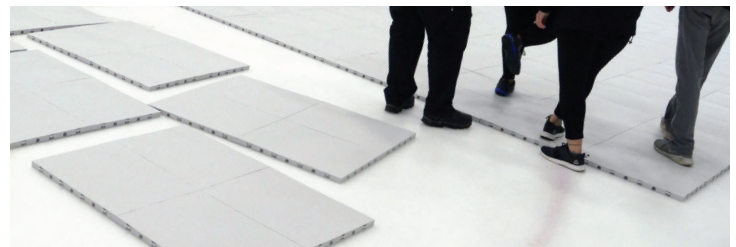


## Fire Rating

UL94HB (Underwriters Laboratory Test):

This test signifies EverBase does not flare up when exposed to an open flame and has a slow burn rate of 2” wide, 0.5 mil thickness test sample. EverBase meets all applicable standards for temporary floor covers. Hot wire ignition rating: 3

ATSM 2859 (Flammability of Finished Textile Floor Covering Materials): Pass



## Shipping Quantities

Standard Pallet:	40" x 48" x 84"	840 sf
53ft Truckload Qty:	26 Pallets	21,840 sf
20ft Ocean Container:	10 Pallets	8,400 sf
40ft Ocean Container:	20 Pallets	16,800 sf
40ft h Cube Ocean Container:	20 Extra Tall Pallets	16,800 sf
Military 463L Pallet (88" x 98" x 96"):	2,400 sf Max Loading	

## Temperature Range

Operating Temperature Range:

6 °F - 120 °F (-14.4 C - 48.8 °C)

Recommended Ice Temperature Range:

18 °F - 22 °F (-7.77 C - -5.55 °C)

## Weight Loading Capacity

8,600 lbs/sf\*

*\*On a solid subsurface, non-moving (static) weight, with equal distribution of load across the tile surface.*

**Support Structure:** Intersecting bi-directional support ribs provide structure, torsional strength, and additional weight distribution and weight loading capabilities.

## Accessories

Male and Female edge connector ramps make the EverBase 3 system ADA compliant for pedestrian access points and assist in areas where wheeled equipment is expected to come onto the floor. Expansion joints allow for thermal expansion and contraction between sections.



Ramps  
6" x 18"

Expansion Joint  
Contracts up to 3.25"

## Features

- Toolless assembly
- Integrated Cable Channels
- May be installed on top of EverBlock modular building blocks to raise floor
- UV Protected
- 100% Recyclable
- Shipped with four modules pre-assembled for easy transport and quick assembly
- Drainage Top allows water and light through to protect grass

