



EverBase® 3 Specifications

Questions?

Call us today at 855.647.6909

or contact us by email at

sales@versare.com



Recyclable, chemical-resistant and waterproof, EverBase 3 access modular flooring features industrialized connectors that offer strength and durability. This system is designed for fast connection over stadiums, arenas, event flooring and other uneven surfaces.

Material

High-Impact Polypropylene Co-Polymer (“no-break”) with UV inhibitors added for outdoor use.

Warranty

Standard 2-year warranty against manufacturer’s defects

Size

18” x 24”

Thickness

1.1”

Weight

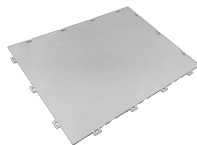
3.61 lbs/tile

Colors

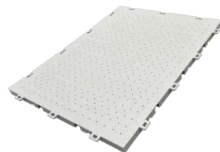
EverRoad comes in Translucent or Light Gray



Solid Top



Drainage Top



Underside



Useful Life Fire Rating

UL94HB (Underwriters Laboratory Test):

This test signifies EverBase does not flare up when exposed to an open flame and has a slow burn rate of 2” wide, 0.5 mil thickness test sample. EverBase meets all applicable standards for temporary floor covers. Hot wire ignition rating: 3

ATSM 2859 (Flammability of Finished Textile Floor Covering Materials): Pass

Shipping Quantities

Standard Pallet:	40” x 48” x 84”	840 sf
53ft Truckload Qty:	26 Pallets	21,840 sf
20ft Ocean Container:	10 Pallets	8,400 sf
40ft Ocean Container:	20 Pallets	16,800 sf
40ft h Cube Ocean Container: Military	20 Extra Tall Pallets	16,800 sf
463L Pallet (88” x 98” x 96”):	2,400 sf Max Loading	

Temperature Range

Operating Temperature Range:

6 °F - 120 °F (-14.4 °C - 48.8 °C)

Recommended Ice Temperature Range:

18 °F - 22 °F (-7.77 °C - -5.55 °C)

Weight Loading Capacity

17,500 lbs/sf*

**On a solid subsurface, non-moving (static) weight, with equal distribution of load across the tile surface.*

Support structure: Intersecting bi-directional support ribs provide structure, torsional strength and additional weight distribution and weight loading capabilities.



Accessories

Male and female edge connector ramps make the EverBase® 3 system ADA compliant for pedestrian access points and assist in areas where wheeled equipment is expected to come onto the floor. Expansion joints allow for thermal expansion and contraction between sections.



Ramps
6" x 12"



Expansion Joint
Contracts up to 3.25"



Features

- Toolless assembly
- May be installed on top of EverBlock® modular building blocks to raise floor
- UV protected
- 100% recyclable
- Shipped with four modules pre-assembled for easy transport and quick assembly
- Drainage top allows water and light through to protect grass
- Translucent option allows for light transmission through tile to turf.

