

Window Panels

Rigid Polycarbonate or Fluted Polycarbonate



VERSARE



855.647.6909



800.310.4874



www.versare.com

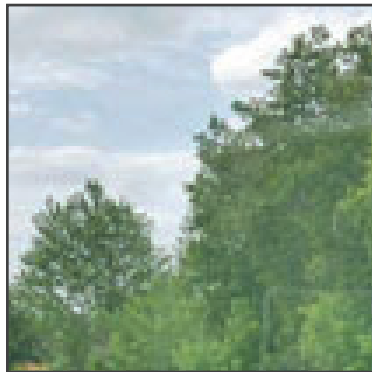
Material: A - Rigid Polycarbonate or B - Fluted Polycarbonate

Impact Resistant: A - Yes, B - Yes

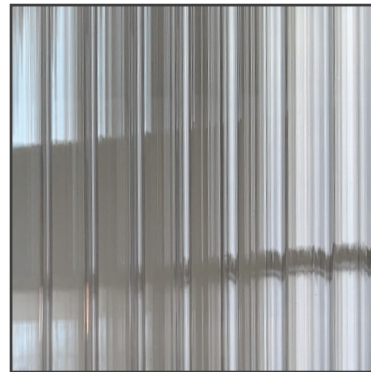
Flammability: A - Class B1, B - Class B1

Maintenance:

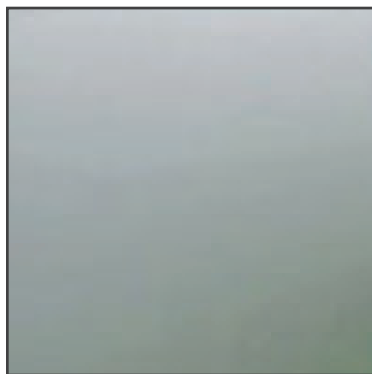
The easiest and safest way to clean acrylic or polycarbonate is with a mild soap, such as dish washing liquid, and a non-abrasive cloth or sponge. Work from the top down to minimize any drips that may run over the finished areas. For acrylic avoid using ammonia or acetone-based products. For polycarbonate avoid using ammonia or alcohol-based products.



CLEAR (A)



CLEAR FLUTED (B)



FROSTED (A)



OPAL FLUTED (B)



Versare Solutions, LLC
3236 California St. NE • Minneapolis, MN 55418
customerservice@versare.com

400031 REV A

Window Panel options are available in:

Hush Panel Configurable Cubicle Partition (Clear, Clear Fluted, Frosted)

Hush Screen Portable Partition (Clear, Clear Fluted, Frosted)

MediPanel Portable Divider (Clear, Clear Fluted, Frosted, Opal Fluted)

MediPanel Countertop Screen (Clear, Clear Fluted, Frosted)