



HUSH PANEL™ CUBICLE SLIDING DOOR FOR NEW CUBICLE KIT

ASSEMBLY INSTRUCTIONS

HARDWARE INCLUDED:

- Door Panel
- Sliding Track for Receiving Panel
- Track Stop
- L-Shaped Receiving Foot (w/ Wheel Channel)
- L-Shaped Foot (No Wheel Channel)
- Allen Key
- Screw

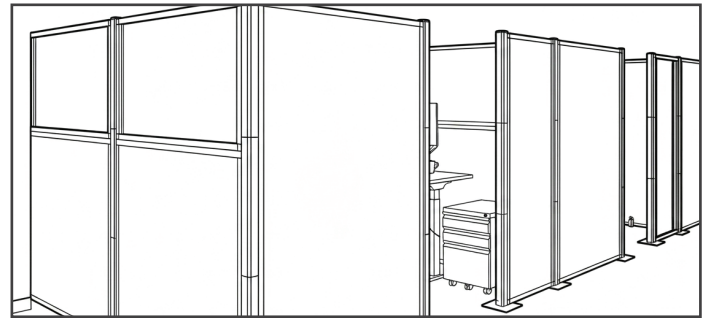


Scan the QR code to watch the assembly video.

Questions or concerns regarding parts? Please contact us at 1.800.830.0210 or email us at customerservice@versare.com

STEP 1.

Build your complete Hush Panel™ Cubicle setup. See the cubicle installation guide for complete assembly instructions.



STEP 2.

Remove the posts on each side of the cubicle entry.



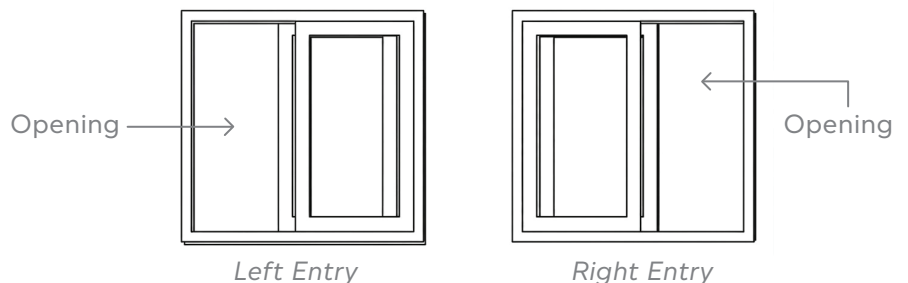
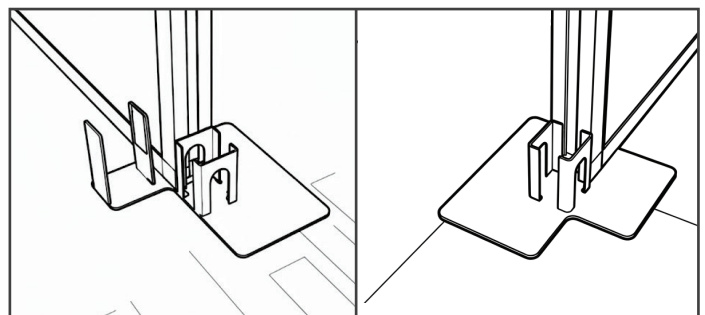
STEP 3.

Replace your existing cubicle feet with the door entry feet:

- L-shaped receiving foot (wheel channel)
- L-shaped foot (no wheel channel)

Confirm whether your door is left-entry or right-entry before installation. For a left-entry opening, position the L-shaped receiving foot (wheel channel) on the right side. For a right-entry opening, position the L-shaped receiving foot (wheel channel) on the left side.

See the diagram for reference.



STEP 4.

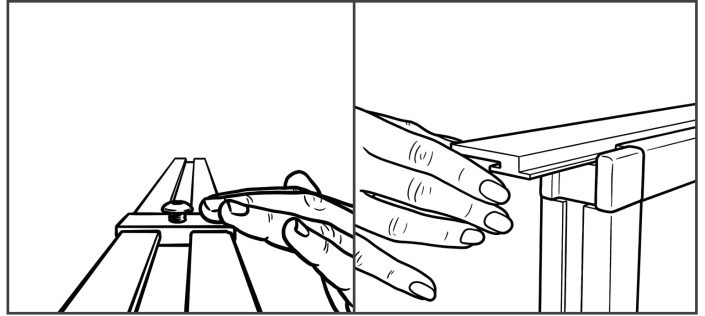
Secure the new feet by reinstalling the posts (except for the very top post of the receiving panel).



STEP 5.

Insert the track stop into the receiving panel first, followed by the sliding track.

Note: If your receiving panel is 4', you do not need to insert the track stop or screw. If your receiving panel is 5' or more, insert the track stop and screw.



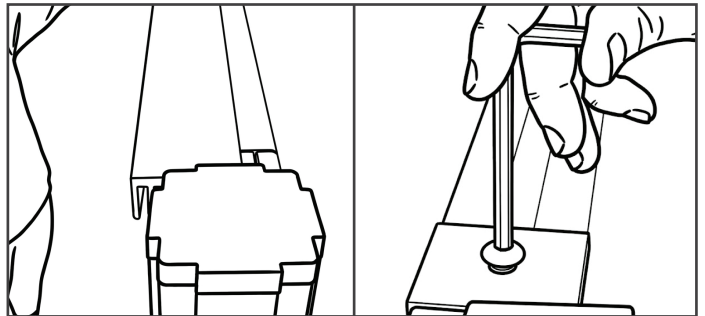
STEP 6.

Secure the receiving panel and sliding track by installing the top post in place.



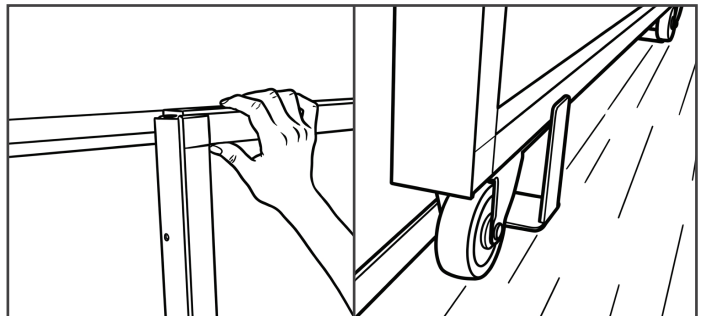
STEP 7.

Move the track stop and sliding track until they are flush against the entry post, then secure them in place with a screw.



STEP 8.

Slide the door onto the receiving panel track, aligning it with the door track, and guide it through the L-shaped receiving foot (wheel channel).



STEP 9.

The door is now installed.

Caution: To keep the door on the track, do not slide it beyond the cubicle opening and L-shaped receiving foot (wheel channel).



RETROFIT HUSH PANEL™ CUBICLE SLIDING DOOR FOR NEW CUBICLE KIT

ASSEMBLY INSTRUCTIONS

HARDWARE INCLUDED:

- Door Panel
- Sliding Track for Receiving Panel
- Track Stop
- L-Shaped Receiving Foot (w/ Wheel Channel)
- L-Shaped Foot (No Wheel Channel)
- Allen Key
- Screw



Scan the QR code to watch the assembly video.

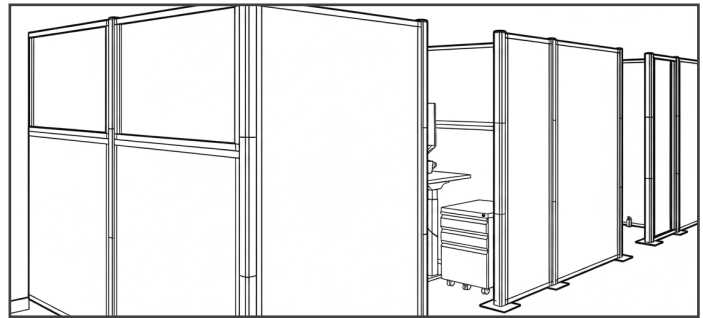
Questions or concerns regarding parts?
Please contact us at 1.800.830.0210 or
email us at customerservice@versare.com

For customers with an existing 6' x 8' x 8' or 6' x 8' x 6' cubicle setup, a receiving panel is required to install a retrofit sliding door. A receiving panel is a fixed panel that supports the door and sliding track.

A minimum 4' receiving panel is needed to mount the door without overlap, while a 5' receiving panel allows the door to fully close and remain stable on the track.

STEP 1.

If your current setup does not include a receiving panel, one must be added prior to installation.



STEP 2.

Remove the posts on each side of the cubicle entry.



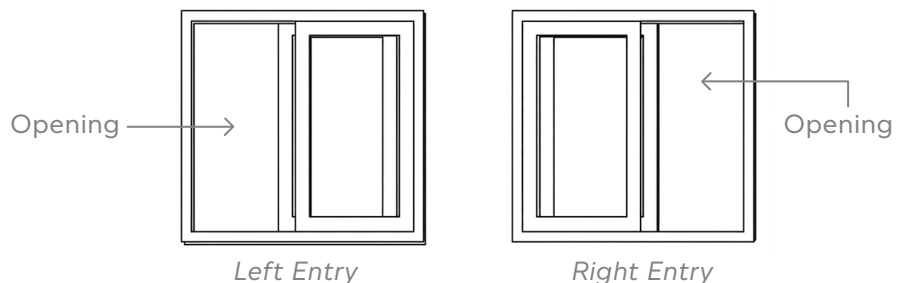
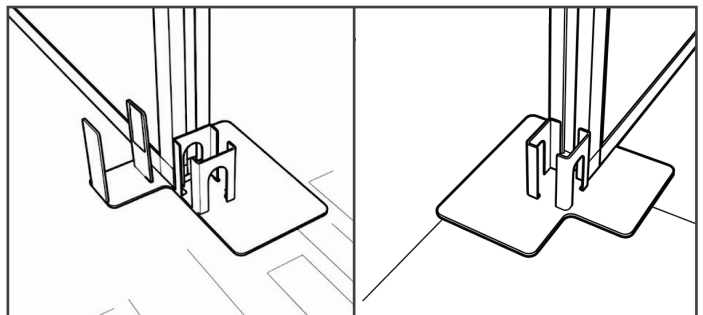
STEP 3.

Replace your existing cubicle feet with the door entry feet:

- L-shaped receiving foot (wheel channel)
- L-shaped foot (no wheel channel)

Confirm whether your door is left-entry or right-entry before installation. For a left-entry opening, position the L-shaped receiving foot (wheel channel) on the right side. For a right-entry opening, position the L-shaped receiving foot (wheel channel) on the left side.

See the diagram for reference.



STEP 4.

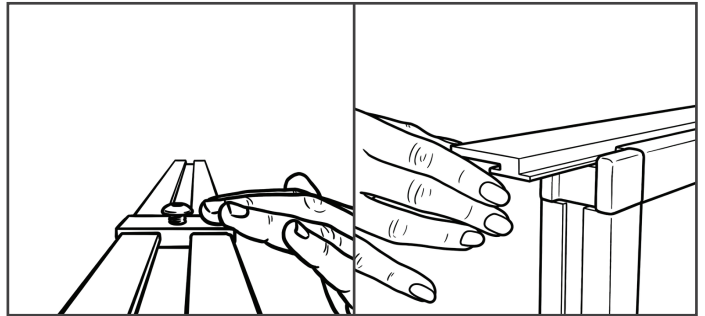
Secure the new feet by reinstalling the posts (except for the very top post of the receiving panel).



STEP 5.

Insert the track stop into the receiving panel first, followed by the sliding track.

Note: If your receiving panel is 4', you do not need to insert the track stop or screw. If your receiving panel is 5' or more, insert the track stop and screw.



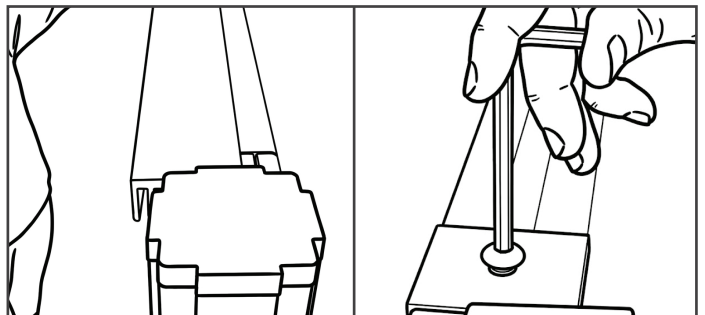
STEP 6.

Secure the receiving panel and sliding track by installing the top post in place.



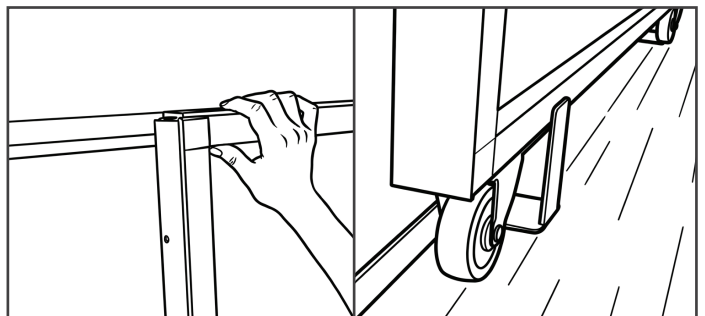
STEP 7.

Move the track stop and sliding track until they are flush against the entry post, then secure them in place with a screw.



STEP 8.

Slide the door onto the receiving panel track, aligning it with the door track, and guide it through the L-shaped receiving foot (wheel channel).



STEP 9.

The door is now installed.

Caution: To keep the door on the track, do not slide it beyond the cubicle opening and L-shaped receiving foot (wheel channel).